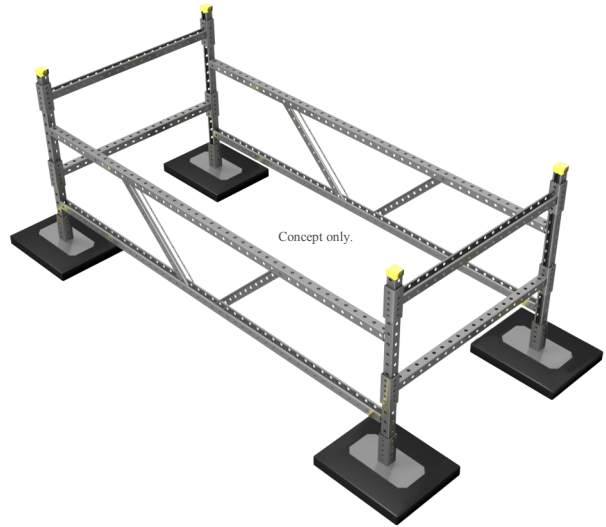


Contractor: _____**Project:** _____

RTSWINDBRACE



Bracing used to connect adjacent H-Stands. To be used at each location that an RTSSPBWIND is used, to add stability to tall stands, or to tie a system together to meet wind load requirements.

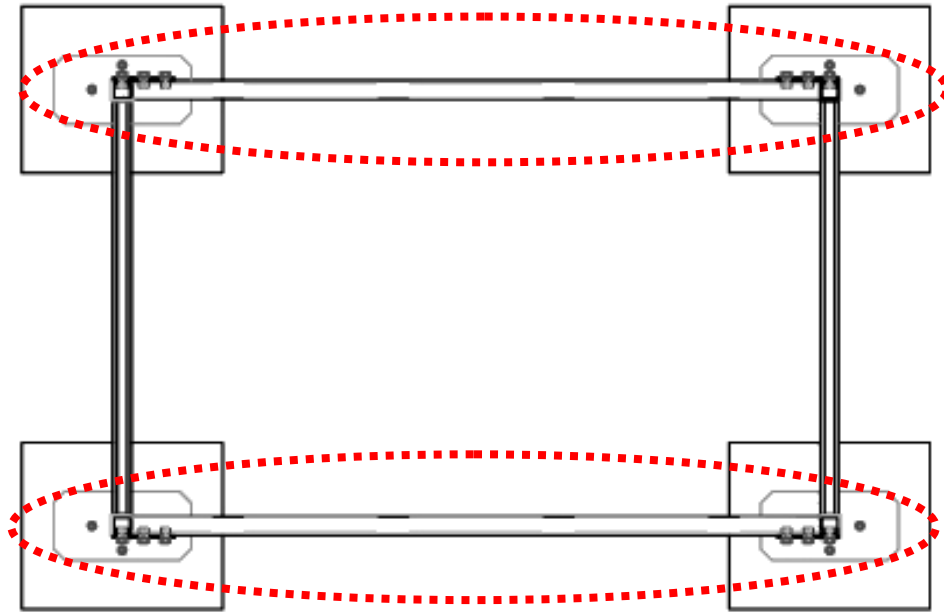
Framing: 1-5/8" x 1-5/8" perforated strut channel

Strut finish: [Electrogalvanized], [Hot Dip Galvanized], or [Stainless Steel].

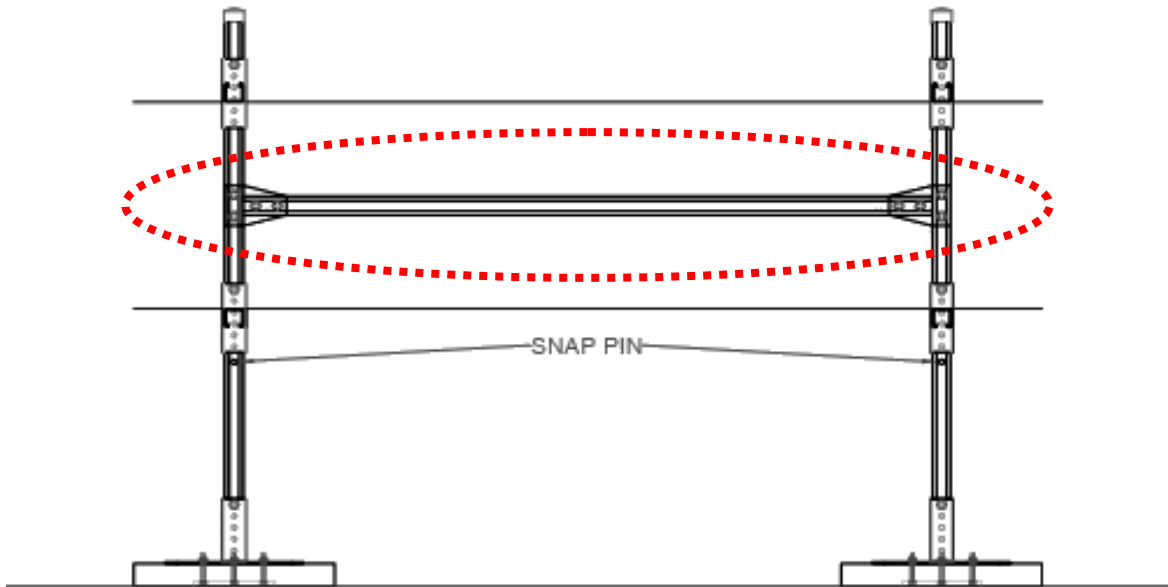
Hardware finish: [Electrogalvanized] or [Stainless Steel].

Installation Instructions:

1. Install H-Stands per instructions.
2. Preload (4) 1/2" channel nuts and bolts into each fitting
3. Attach fitting to upright at the desired height.
4. Install strut channel between H-stands using the (2) remaining free channel nuts and bolts.
5. Secure all hardware to 50ft/lbs.



PLAN VIEW



ELEVATION VIEW